



## Ronald L Archer

March 6, 1933 - April 18, 2012

Ronald L. Archer, 79, of Fern Park, Florida, passed away Wednesday, April 18, 2012. He was born March 6, 1933 in Portia, Arkansas to Cyril and Roberta Archer. Ronald is survived by his wife, Anne Archer, his children, Brenda, Tim, Amy, Melanie, Holly, David, Dan, Rob and Mary. 21 Grandchildren and 5 great-grandchildren.

# Previous Events

## Visitation

APR **23**. 6:00 PM - 8:00 PM (ET)

DeGusipe Funeral Home & Crematory Maitland Chapel

9001 N. Orlando Ave

Maitland, FL 32751

(407) 695-2273

todd@degusipe.com

<https://www.degusipefuneralhome.com>

# Tribute Wall

KP

“ Holly,

*I am so sorry for your loss. May you find comfort in the memories of you and your "Daddy". Please extend my condolences to your family.*

*Karen Sue Parker*

---

**Karen Sue Parker** - April 23, 2012 at 05:29 PM



BW

“ Ron was a very cherished friend and fellow Arkansan. It was my good fortune to have had him for a friend.

*Bobby Joe Waterfield*

---

**Bobby Joe Waterfield** - April 23, 2012 at 12:58 PM



“ Bobby Waterfield lit a candle in memory of Ronald L Archer

---

**Bobby Waterfield** - April 23, 2012 at 12:52 PM



DB

“ *Ron was a quiet man with a keen wit. I am pleased to call him friend.*

*Dick Bardsley*

---

**Dick Bardsley** - April 23, 2012 at 11:47 AM

CC

“ *Cheryl Connell lit a candle in memory of Ronald L Archer*



---

**Cheryl Connell** - April 21, 2012 at 01:04 AM

RL

“ *My sincere condolences to the family. It is hard to lose someone close to us.*

*But please know that God does not forget our loved ones or us as we have to cope with this loss. We are encouraged to throw all our anxieties upon him because he cares for you".*

*1 Pet 5:7)*

---

**Ruth Lindsay** - April 20, 2012 at 07:11 PM

WS

“ Ron and Anne and their children were very close friends of ours in the 1960s and early 1970s. Brenda and Tim were about the same ages as our two children, Gerry and Bill, Jr. (Bumps). Ron was one of the finest men I have ever known and it was a real privilege to have had him for a friend. In addition to his more obvious talents, he was the only person I ever knew who took a nap before bedtime, and could lie down on his couch and take a nap on a Saturday afternoon with a house full of his kids, my kids and others from the neighborhood.

Anne and all of his children (many of whom were born after my family left Russellville) and his grandchildren have our deepest sympathy for their loss.

William H. (Bill) Schulze, Sr.

---

**William H. Schulze, Sr.** - April 20, 2012 at 02:07 PM

SL

“ Mel - My prayers are with you and so are all of us here at work. We love you. Sandy Linn

---

**Sandy Linn** - April 20, 2012 at 12:44 PM

HM

“ 1 file added to the album New Album Name

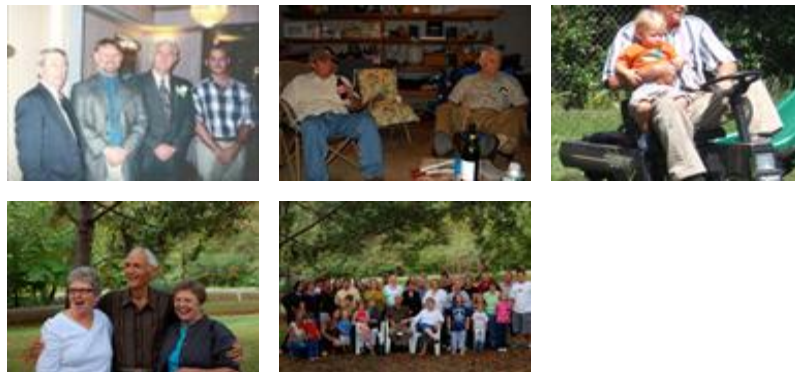


---

**Holly Archer Mitchem** - April 20, 2012 at 08:41 AM

HM

“ 10 files added to the album *New Album Name*



**Holly Archer Mitchem** - April 20, 2012 at 08:40 AM



“ *John Abrams lit a candle in memory of Ronald L Archer*



**John Abrams** - April 19, 2012 at 08:30 PM



“ *Terri Wix lit a candle in memory of Ronald L Archer*



**Terri Wix** - April 19, 2012 at 10:33 AM



*Holly  
Thoughts and prayers are with you and your family. I pray that GOD  
will sent peace and comfort during this difficult time.*

**Terri Wix** - April 19, 2012 at 10:36 AM

HM

*Thank you so much Terri.*

---

**Holly Archer Mitchem** - April 19, 2012 at 07:21 PM

CC

*I am so sorry for your loss. My thoughts are with you and your family.  
Cheryl & Patrick Connell*

---

**Cheryl Connell** - April 21, 2012 at 01:04 AM